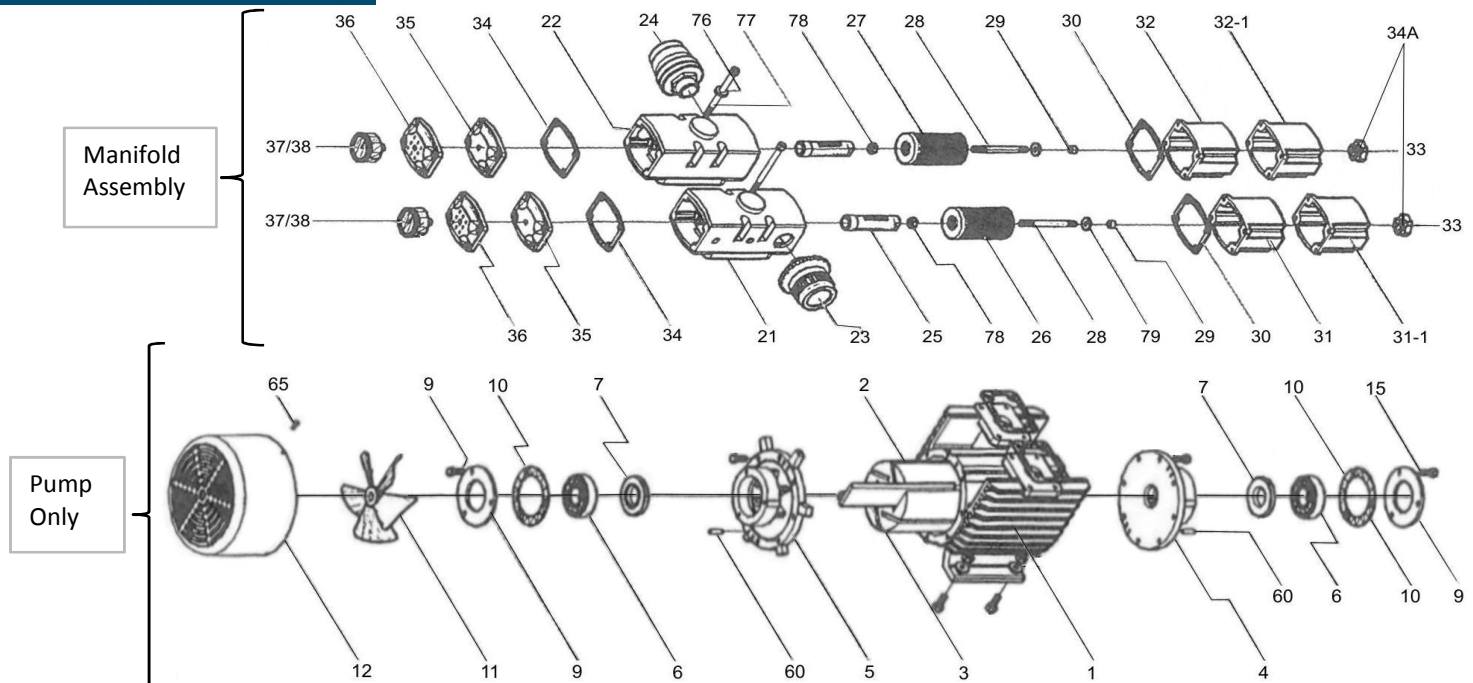


Parts Breakdown for KRX-7A Vacuum Pump



#	Description	Qty	Catalog #
1	Cylinder	1	Call
2	Rotor	1	Call
3	*Vane	4	4039395010
4	Side Plate Motor Side	1	Call
5	Side Plate Fan Side	1	Call
6	*Bearing	2	JVP-7-00006
7	*Spacer	2	JVP-7-00007
9	Bearing Holder	2	JVP-7-00009
10	*Shim Paper	10	JVP-7-00010
11	Fan	1	2035372010
12	Fan Cover	1	Call
13	*Manifold Gasket	2	JVP-7-00013
15	Key	1	Call
21	Manifold Case Only, Pressure	1	Call
	Manifold Complete Assembly- Pres.		Call
22	Manifold Case Only, Vacuum	1	Call
	Manifold Complete Assembly, Vacuum		Call
23	Pressure Regulator	1	JVP-1002-00023
24	Vacuum Regulator	1	JVP-1002-00024
25	Silencer Pipe Assembly	2	Call
26	Delivery Filter Element (Steel)	1	JVP-1002-00026
27	*Filter (Pleated Paper)	1	JVP-1002-00027
28	Filter Rod	2	Call
29	*Metal Spring	2	JVP-7-00029

#	Description	Qty	Catalog #
30	*Filter Gasket	2	Call
31	Muffler Cover (Metal)	1	2035719010
31-1	Muffler Cover w/ holes	1	2035719010
32	Filter Cover/Case (Clear)	1	2035718010
32-1	Filter Cover w/ holes (clear)	1	2035718010
33	Knob Nut	2	4034947020
33a	*Gasket Washer for Filter Knob	1	JVP-1002-00033A
34	Manifold Cap Gasket	2	Call
35/36	Manifold Cap Cover- Specify tapped for gauge, blow or solid	2	Call
37/38	Combination Vacuum/Pressure Gauge	1	JVP-ALL-0037/38
60	Taper Pin	4	33611114100
65	Round Head Screw	3	Call
77	Allen Bolt for Manifold	2	Call
78	Nut	2	Call
79	Filter Washer	4	Call
80	Rubber Feet	4	JVP-ALL-00080
Items not Pictured			
	Base (Steel)	1	Call
	Motor- 2 HP, 1.5 kW, 230/460v	1	Call
	Coupling Cover	1	Call
	Pump Side Coupling	1	Call
	Spider	1	Call
	Motor Side Coupling	1	Call
*Included In Rebuild Kit			