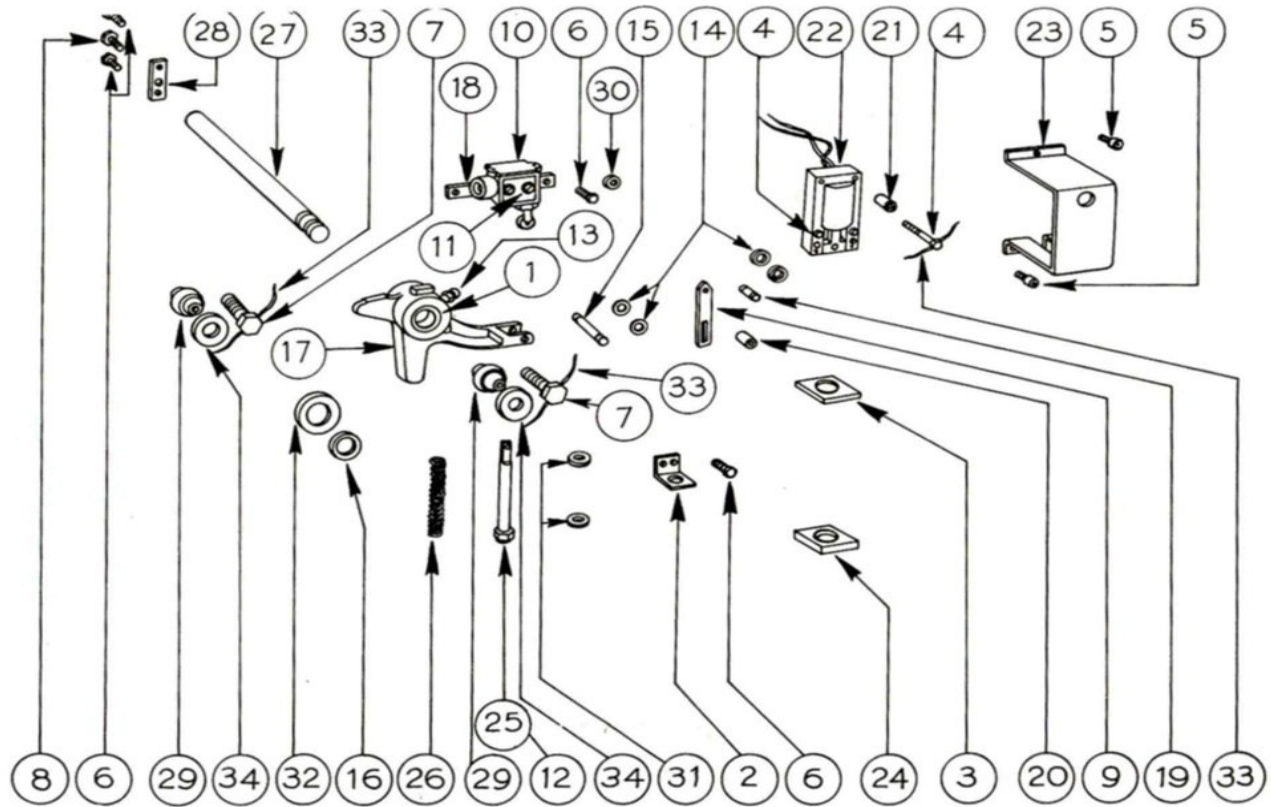


## Lawson Cutter Parts Breakdowns -Old Style

### Safety Latch 2BA6003



| Key No. | Part No. | Description                                     | Qty |
|---------|----------|---|-----|
| 1       | 2BA2052  | Brushing  | 1   |
| 2       | 2BA2060  | Bracket-Spring                                  | 1   |
| 3       | 2BA2068  | Cushion   | 2   |
| 4       | 2BA2048  | Capscrew-Hex. Hd. Drilled 1/4"- 20 x 2-1/4" Lg. | 4   |
| 5       | 200200   | Capscrew-Soc. Hd. 1/4"-20 x 3/4" Lg.            | 3   |
| 6       | 6047     | Capscrew-Hex. Hd. 1/4"-20 x 3/4" Lg.            | 6   |
| 7       | 2BA2049  | Capscrew-Hex. Hd 5/8"- 11 x 2" Lg.              | 1   |
| 8       | 6049     | Capscrew- Hex. Hd 3/8"- 16 x 3/4" Lg.           | 1   |
| 9       | 2BA2025  | Link  | 1   |
| 10      | 3664     | Micro Switch-Safety Latch                       | 1   |
| 11      | 990      | Nut-Elastic Stop 6-32                           | 2   |
| 12      | 6686     | Nut-Elastic Stop 1/2"-20                        | 1   |
| 13      | 6215     | Oil Hole Cover                                  | 1   |
| 14      | 2547     | O-Ring  | 4   |
| 15      | 2BA2028  | Pin   | 1   |

| Key No. | Part No. | Description                 | Qty |
|---------|----------|-----------------------------|-----|
| 16      | 1778     | Retaining Ring              | 1   |
| 17      | 2BA5005  | Safety Latch                | 1   |
| 18      | 2BA2066  | Switch Bar                  | 1   |
| 19      | 2BA2026  | Solenoid Pin                | 1   |
| 20      | 2BA2063  | Spacer                      | 2   |
| 21      | 2BA2064  | Spacer                      | 2   |
| 22      | 3961     | Solenoid                    | 1   |
| 23      | 2BA4013  | Solenoid Enclosure          | 1   |
| 24      | 2BA2034  | Cushion                     | 1   |
| 25      | 2BA2027  | Spring Rod                  | 1   |
| 26      | 0BA2011  | Spring                      | 1   |
| 27      | 2BA2051  | Safety Latch Shaft          | 1   |
| 28      | 2BA2058  | Safety Latch Shaft Retainer | 1   |
| 29      | 3663     | Tube Form Mounting          | 2   |
| 30      | 1131     | Washer- 1/4" Std            | 2   |
| 31      | 1135     | Washer- 1/2" Std            | 2   |
| 32      | 2BA2035  | Washer                      | 1   |
| 33      | 1671     | Wire-Binding 6" Large       | 3   |
| 34      | 1137     | Washer- 5/8" Std            | 2   |